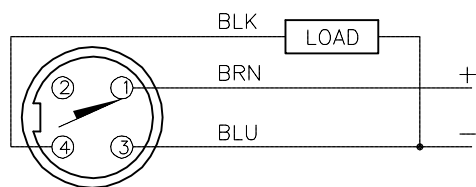


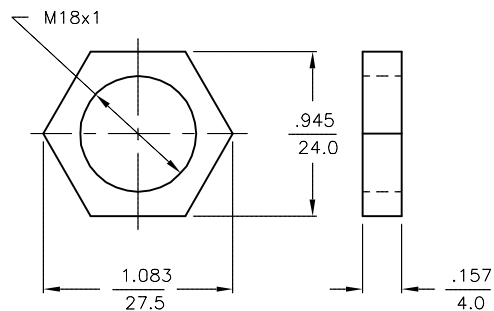
## WIRING DIAGRAMS



OUTPUT: AP6X

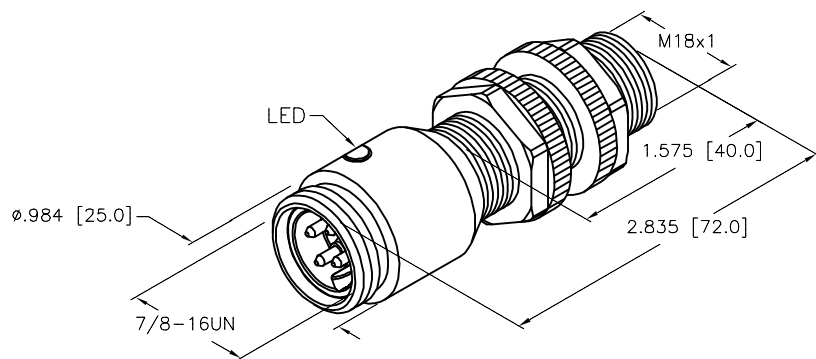
SHORT-CIRCUIT AND OVERLOAD PROTECTED

## LOCKNUT LN-P18



## SPECIFICATIONS

RATED OPERATING DISTANCE	10.0 mm = .394"
MOUNTING MODE	NON-FLUSH
TEMPERATURE DRIFT	$\leq \pm 10\%$
HYSTERESIS	3-15%
REPEATABILITY	$\leq 2\%$
OPERATING TEMPERATURE	-25°C to +70°C (-13°F to +158°F)
RATED OPERATIONAL VOLTAGE	10-30 VDC
RATED OPERATIONAL CURRENT	$\leq 200$ mA
NO LOAD CURRENT	$\leq 15$ mA
RESIDUAL CURRENT	$\leq 0.1$ mA
RATED INSULATION VOLTAGE	$\leq 0.5$ kV
SHORT-CIRCUIT PROTECTED	YES
MAX. VOLTAGE DROP	$\leq 1.8$ V
REVERSE POLARITY PROTECTION	INCORPORATED
WIRE-BREAK PROTECTION	INCORPORATED
OUTPUT FUNCTION	3-WIRE, NORMALLY OPEN, PNP
MAX. SWITCHING FREQUENCY	$\leq 0.5$ kHz
HOUSING MATERIAL	PLASTIC, PA12-GF20
ACTIVE FACE	PLASTIC, PA12-GF30
SHOCK	30 g, 11 ms
VIBRATION	55 Hz, 1 mm AMPLITUDE (IN ALL 3 PLANES)
DEGREE OF PROTECTION	IP67



SOURCE DRAWING - FOR REFERENCE ONLY

RELATED DOCUMENTS		3RD ANGLE PROJECTION		<div>THIS DRAWING IS CONFIDENTIAL AND THE PROPERTY OF TURCK INC. USE OF THIS DOCUMENT WITHOUT WRITTEN PERMISSION IS PROHIBITED.</div> <div><b>TURCK INC</b> <i>High Technology Sensors and Automation Controls</i></div>		<div>3000 CAMPUS DRIVE MINNEAPOLIS, MN 55441 1-800-544-7769 (763) 553-7300 (763) 553-0708 fax turck.com</div>			
1. 2. 3. 4.									
MATERIAL		<div>ALL DIMENSIONS DISPLAYED ON THIS DRAWING ARE FOR REFERENCE ONLY</div> <div>CONTACT TURCK FOR MORE INFORMATION</div>		DRFT	GMB	DATE	8/1/89	DESCRIPTION NI10-P18-AP6X-B2341	
SEE SPECS				DSGN		SCALE	1=1.3		
FINISH				UNIT OF MEASUREMENT INCH [ MILLIMETER ]				IDENTIFICATION NO. T4697900	
		DO NOT SCALE THIS DRAWING				FILE: T4697900		SHEET 1 OF 1	